



CHARACTER AREAS AND CONCEPT DESIGN



REGIONAL MUNICIPALITY
OF WOOD BUFFALO

URBAN
SYSTEMS

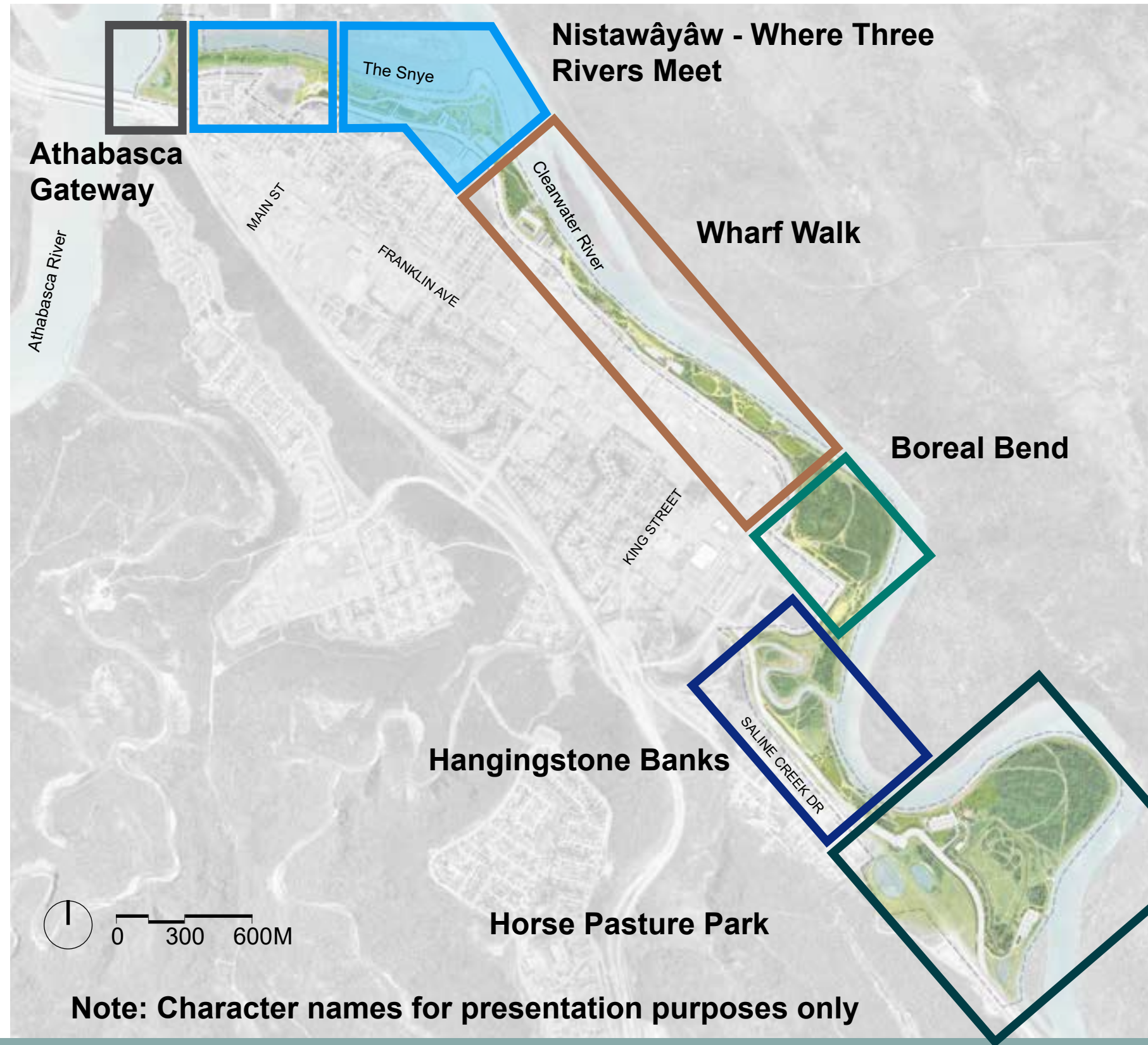
dtah

WATERFRONT PARK WILL INCLUDE:

1. Indigenous Culture
2. Signage + Wayfinding including English, Cree, Dene and Michif
3. Accessible pathways with seating
4. Pedestrian crossing from Athabasca Gateway east to remainder of waterfront park
5. Connections to downtown
6. Play / Activation Opportunities
7. Discovery Moments
8. Support Flood Protection + Resilient Design
9. Existing off leash dog park
10. Reconfigure Tom Weber boat launch



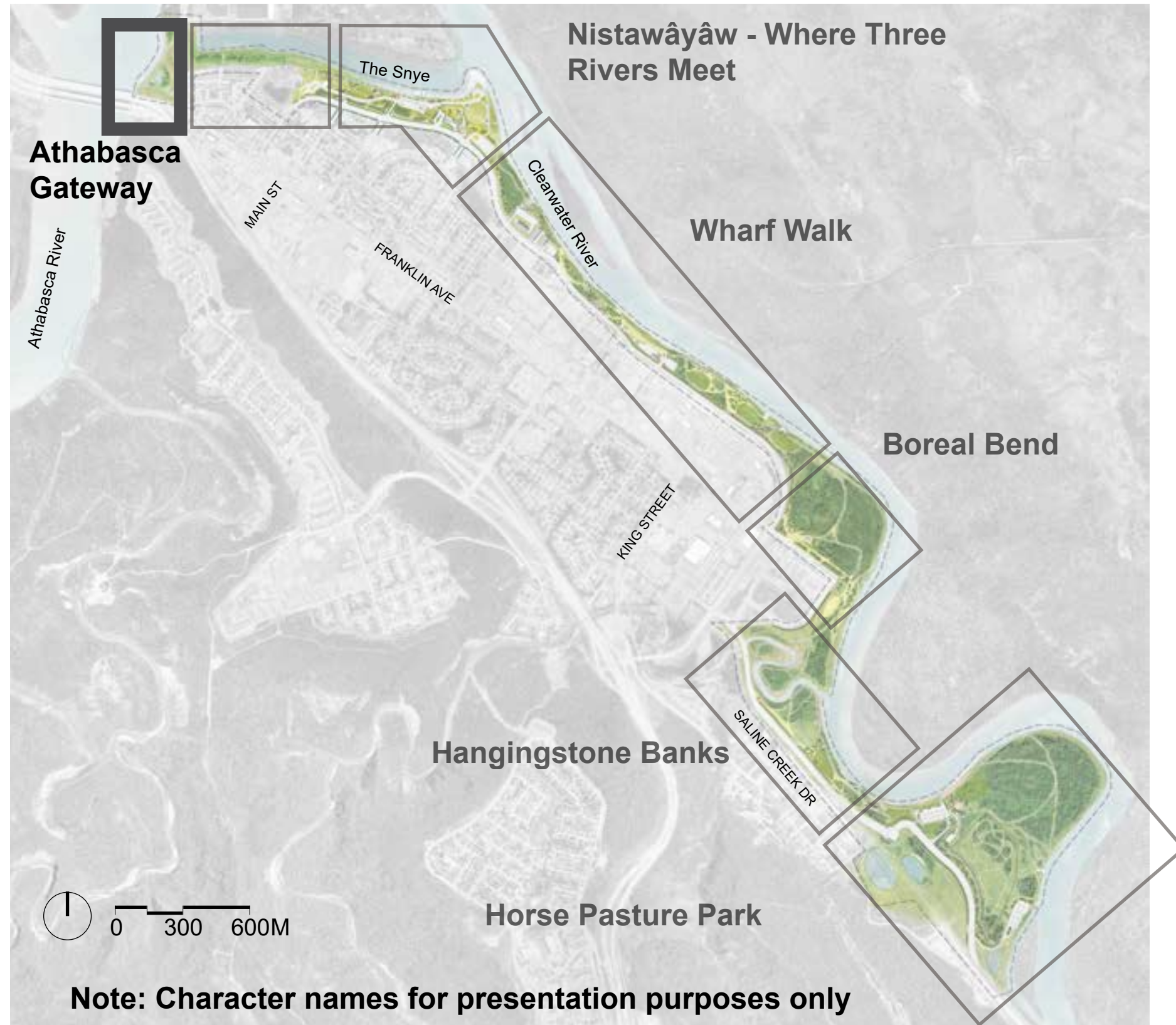
WATERFRONT CHARACTER AREAS



- Indigenous Communities and Cultural Significance
- Athabasca, Clearwater and Snye Rivers
- Gateway to the North - shipping / river / rail / aviation
- Settlers / Fur Trade / Hudson's Bay Co.
- Industry / Oil Sands / Innovation
- Northern Nature - Northern Lights, Boreal Forest, Lakes, Sand Dunes, Flora, Fauna
- Resilience - flooding, fire, winter climate
- Regional Connections - rural hamlets, IC's, tourism opportunities



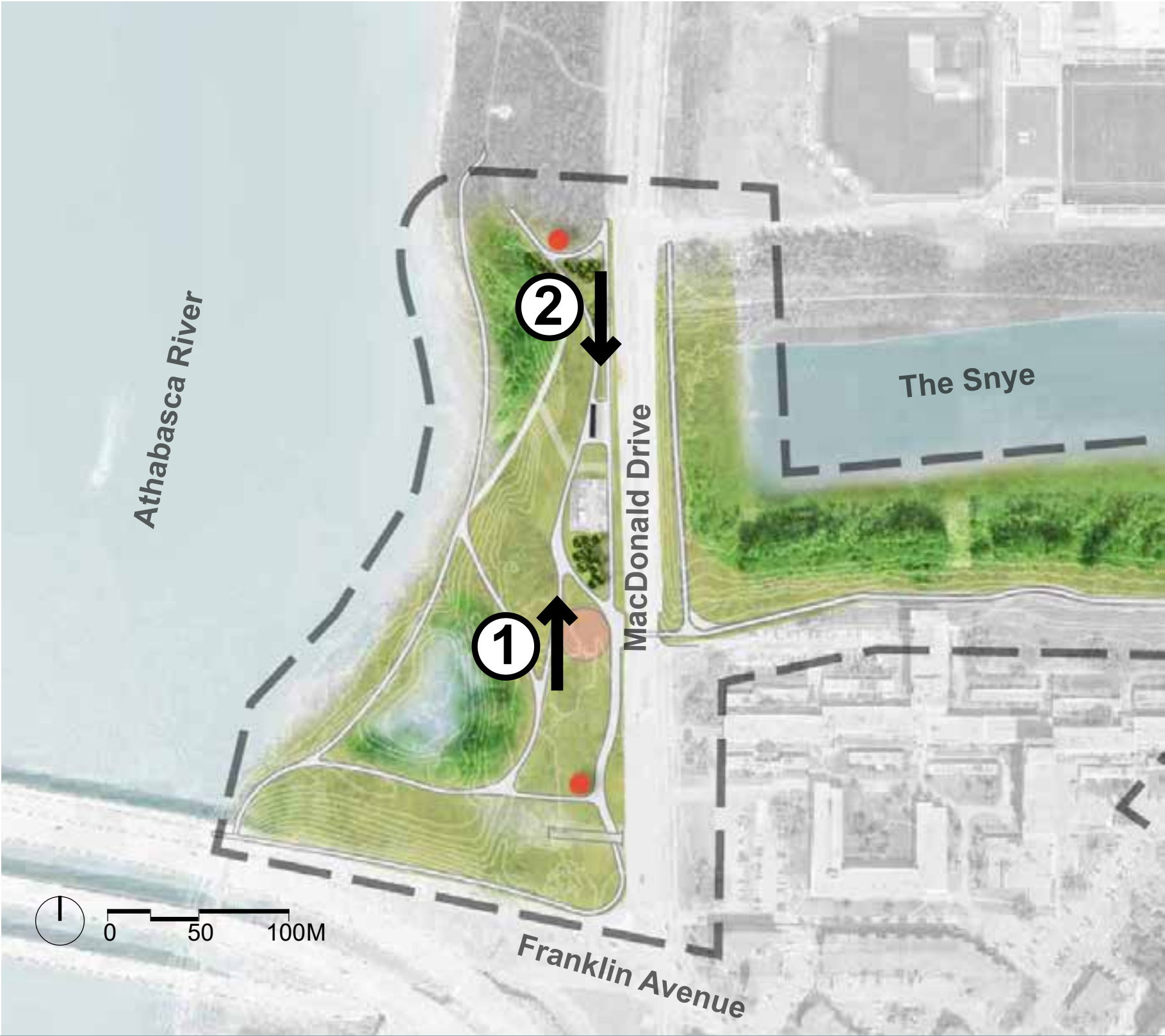
ATHABASCA GATEWAY



- Regional transportation and sustenance - Indigenous river use, winter roads, frozen river, barging to Fort Chipewyan
- Gateway to the North
- Original Fort - settlers / fur trade / Hudson's Bay Company
- Athabasca Valley
- Causeway history
- Connection to the Snye and MacDonald Island
- Breathtaking views
- Connection to Fox Trail / Total Trail and future Métis Cultural Centre



ATHABASCA GATEWAY



1. ATHABASCA GATEWAY



2. ATHABASCA GATEWAY

accessible multi-use trails
connecting to Athabasca
Bridge and pedestrian path

Reflections on the River

marker pole location

stone steps to the water

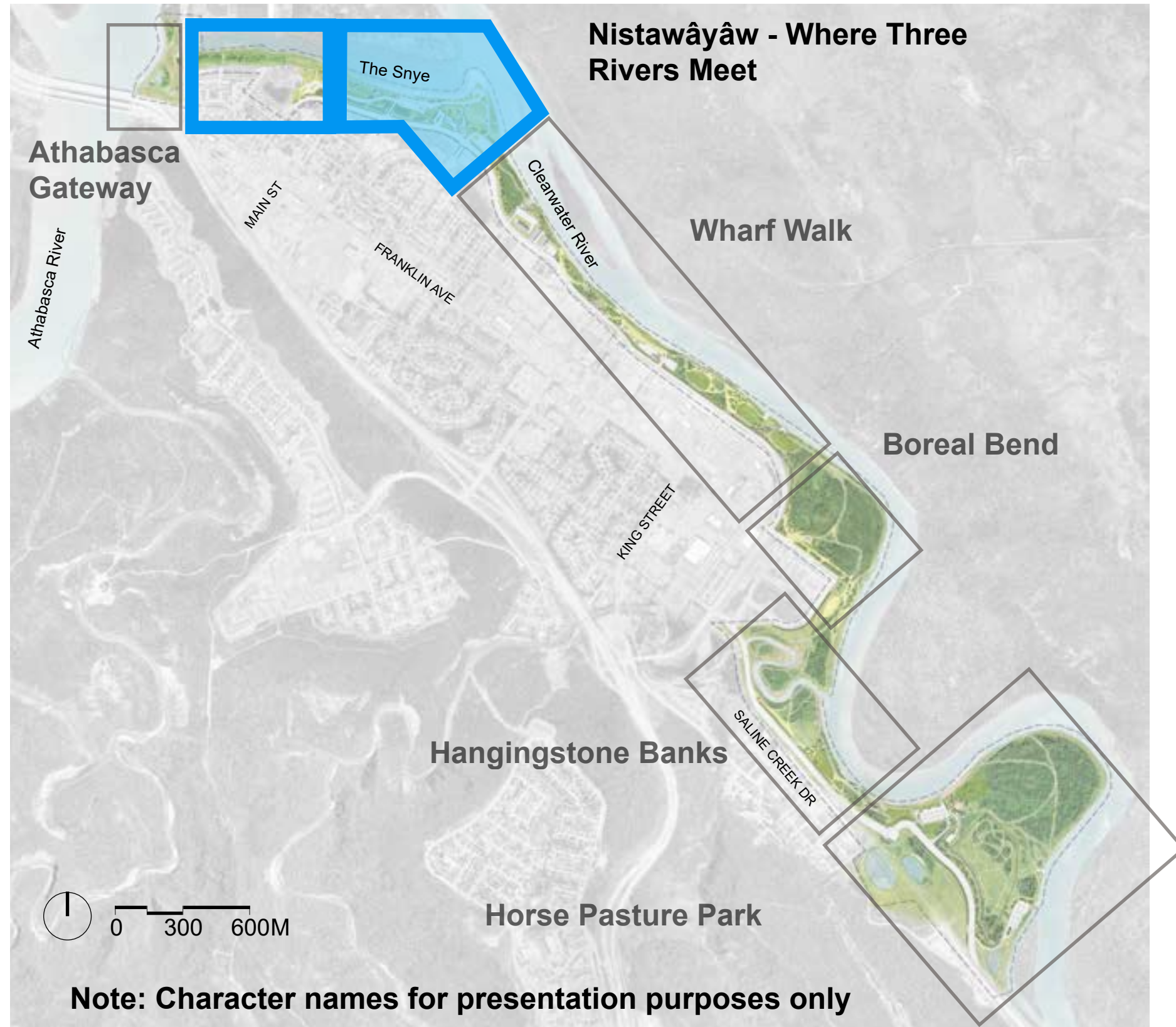


REGIONAL MUNICIPALITY
OF WOOD BUFFALO

URBAN
SYSTEMS

dtah

NISTAWÂYÂW



- Indigenous strength - rich history, Moccasin Flats, signing of adhesion to Treaty 8
- Celebration venue
- Family connections - WinterPLAY
- Regional destination
- Signage and wayfinding incorporate storytelling, history and larger region
- Aviation - bush pilots, Punch Dickins Memorial
- Ice Jam Flooding - flood protection
- Toboggan hill
- Touch the water



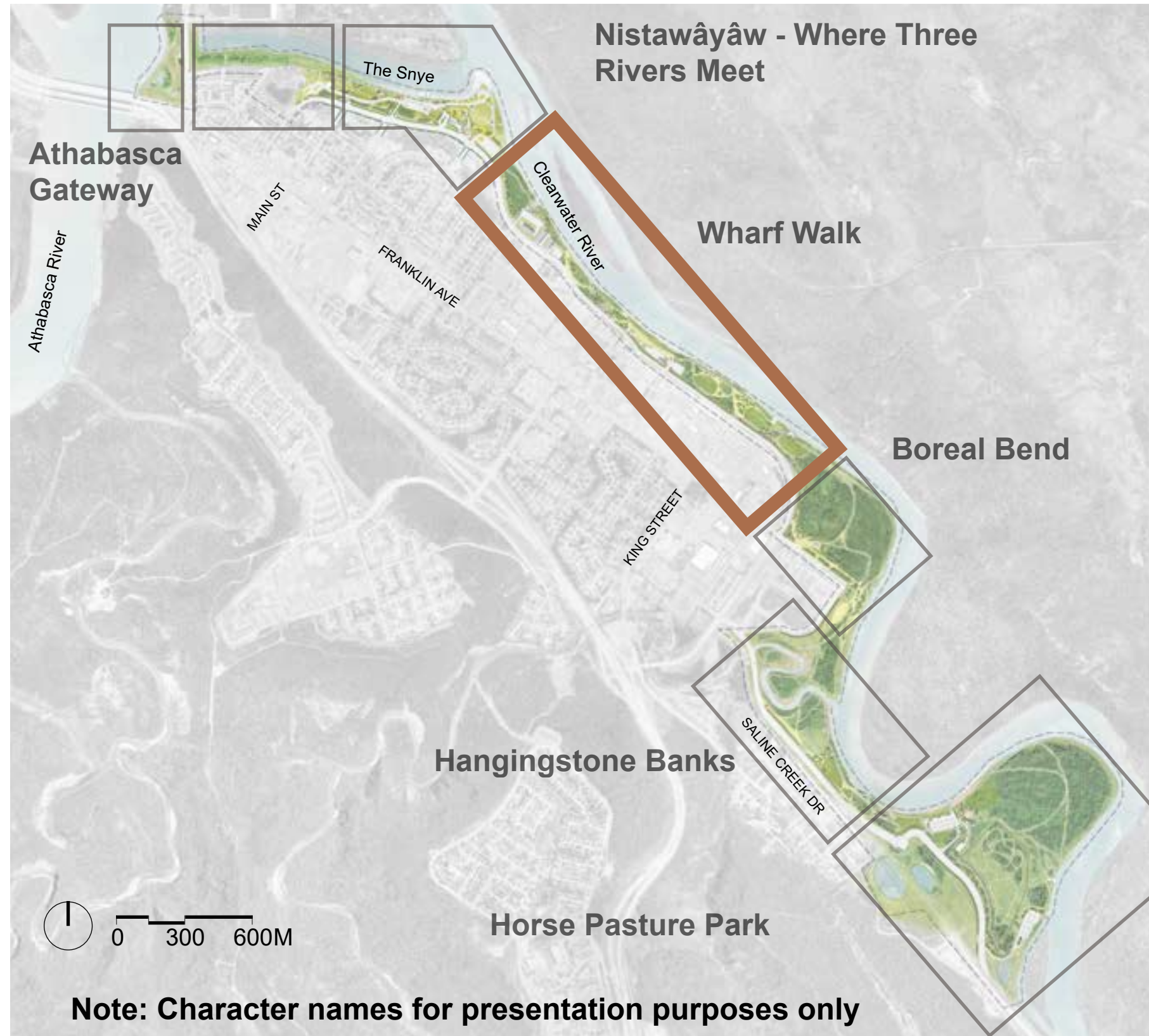
NISTAWÂYÂW: EXISTING MULTI-USE



- Coordination with Moccasin Flats Memorial
- Include signage and wayfinding
- Add flood mitigation



WHARF WALK



- Regional transportation hub - remnant wharfs, paddle wheelers, uranium trade, access to the north
- Marine Park
- Industry, innovation, shipping, minerals
- Oil Sands
- Resilience - flooding and winter climate
- Indigenous communities and culture - trap lines, fishing, sustenance, boat operation
- Connection to other regional tourism - Heritage Park, Oil Sands Discovery Centre, Giants of Mining Exhibit, Syncrude's bison heard
- Support aging-in-place



WHARF WALK



3. PLAZA AT MARSHALL ST



stone steps to the water

plaza lighting

marker pole location

flexible lawn

plaza + existing outlook

wharf marker

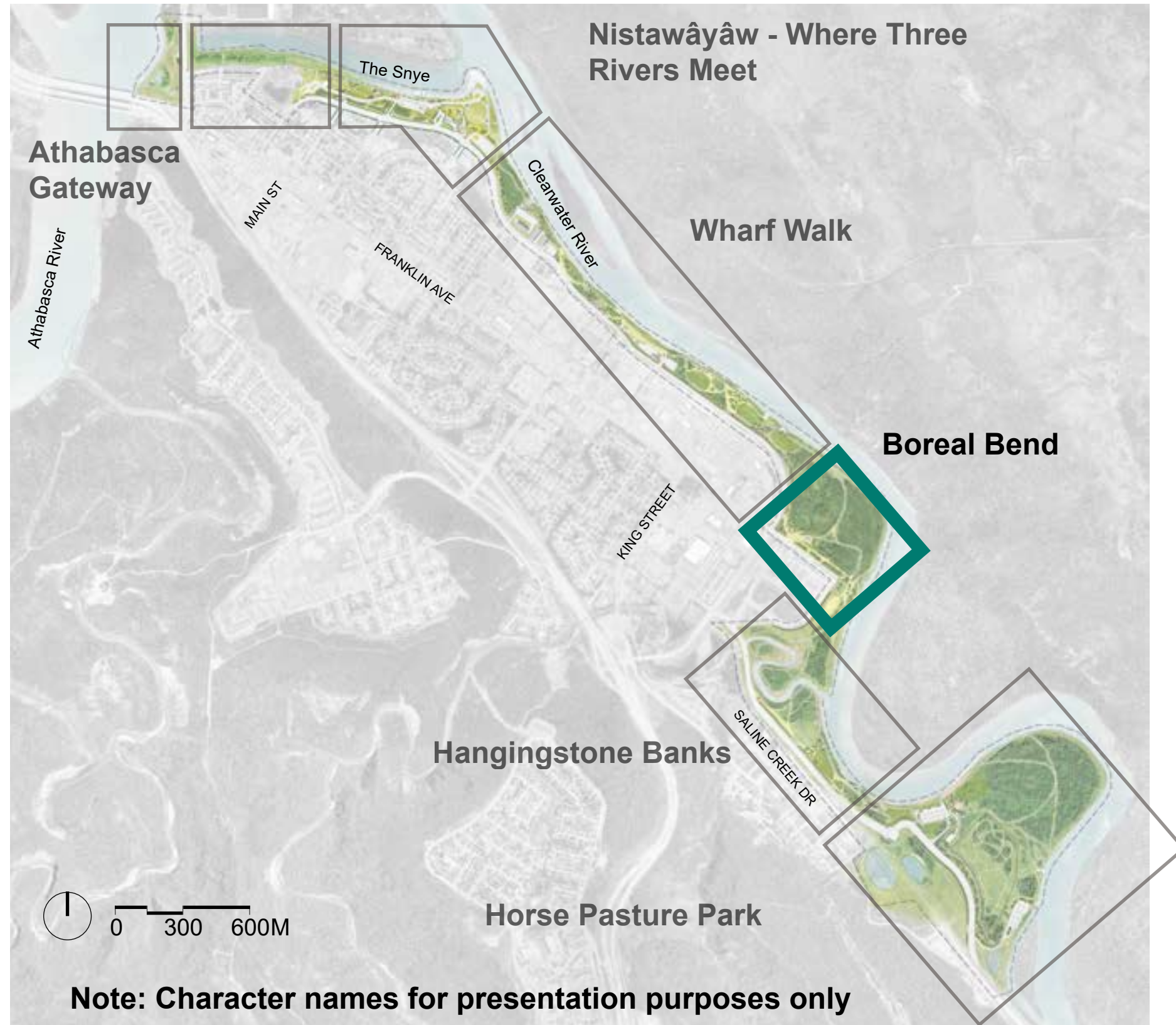
existing trail



4. PLAZA AT MARSHALL ST



BOREAL BEND



- Northern Nature - Northern Lights viewing opportunity, boreal forest with mature growth, fauna / flora
- Passive scavenger hunt for WB animals along park network
- Indigenous culture - trap lines, fishing, connection to the water
- Flexible space
- Opportunity for play



BOREAL BEND



5. BOREAL BEND LOOKOUT



6. BOREAL BEND PARKOUR



7. BOREAL BEND IN WINTER



existing mature forest

seating

performance platform /
open seating

accessible
multi-use path

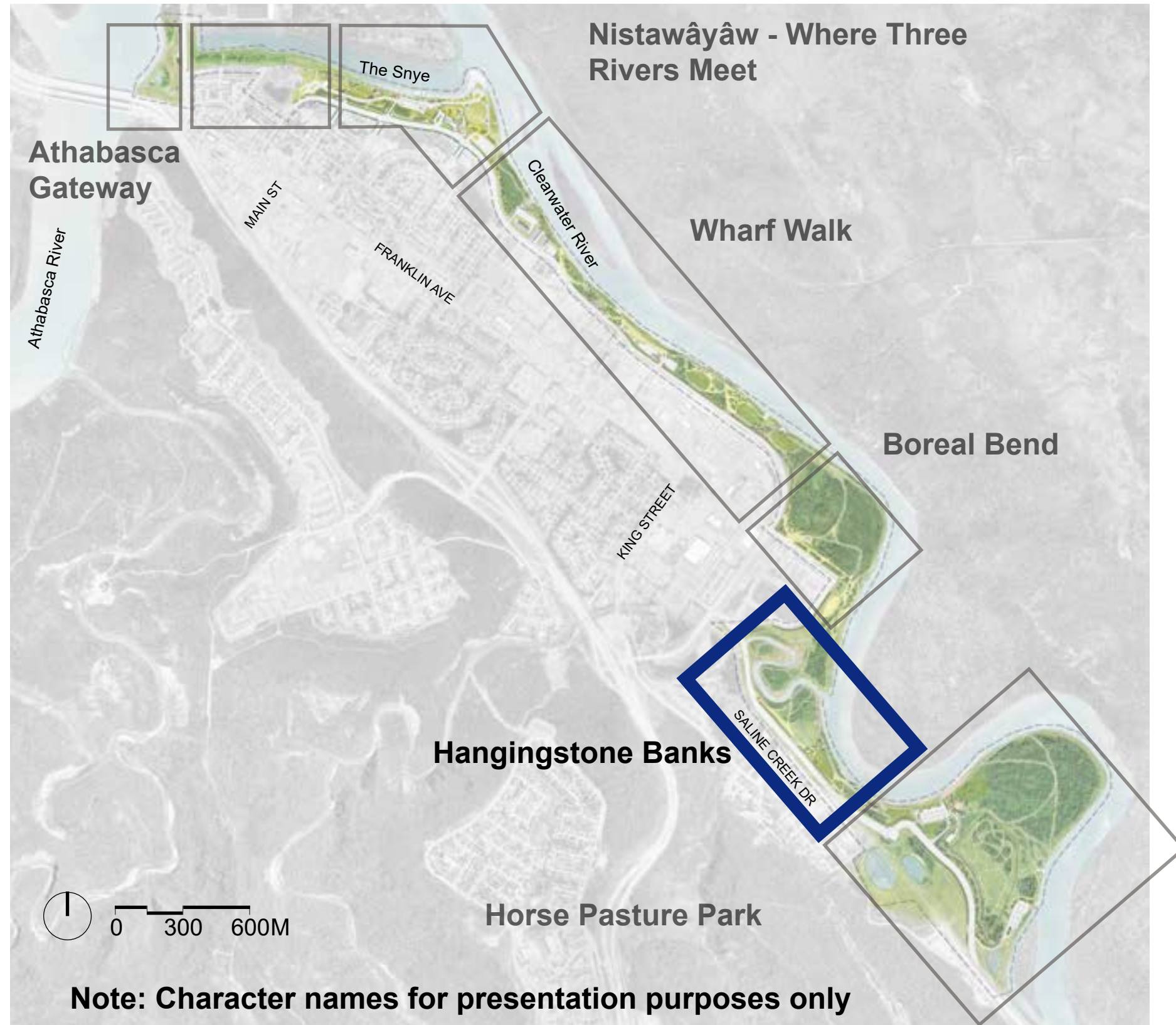


REGIONAL MUNICIPALITY
OF WOOD BUFFALO

URBAN
SYSTEMS

dtah

HANGINGSTONE BANKS



- Naturally intriguing and dynamic Hangingstone River - ecology, sandbars, exploration
- Rail connection to the water - Alberta & Great Waterways Railway (A&GWR)
- Original downtown - historic centre
- Settlers
- Connection to other regional tourism - Heritage Park, Legion Museum
- Fishing



HANGINGSTONE BANKS



8. HANGINGSTONE BANKS



riparian edge

Hangingstone River

accessible multi-use path

educational signage

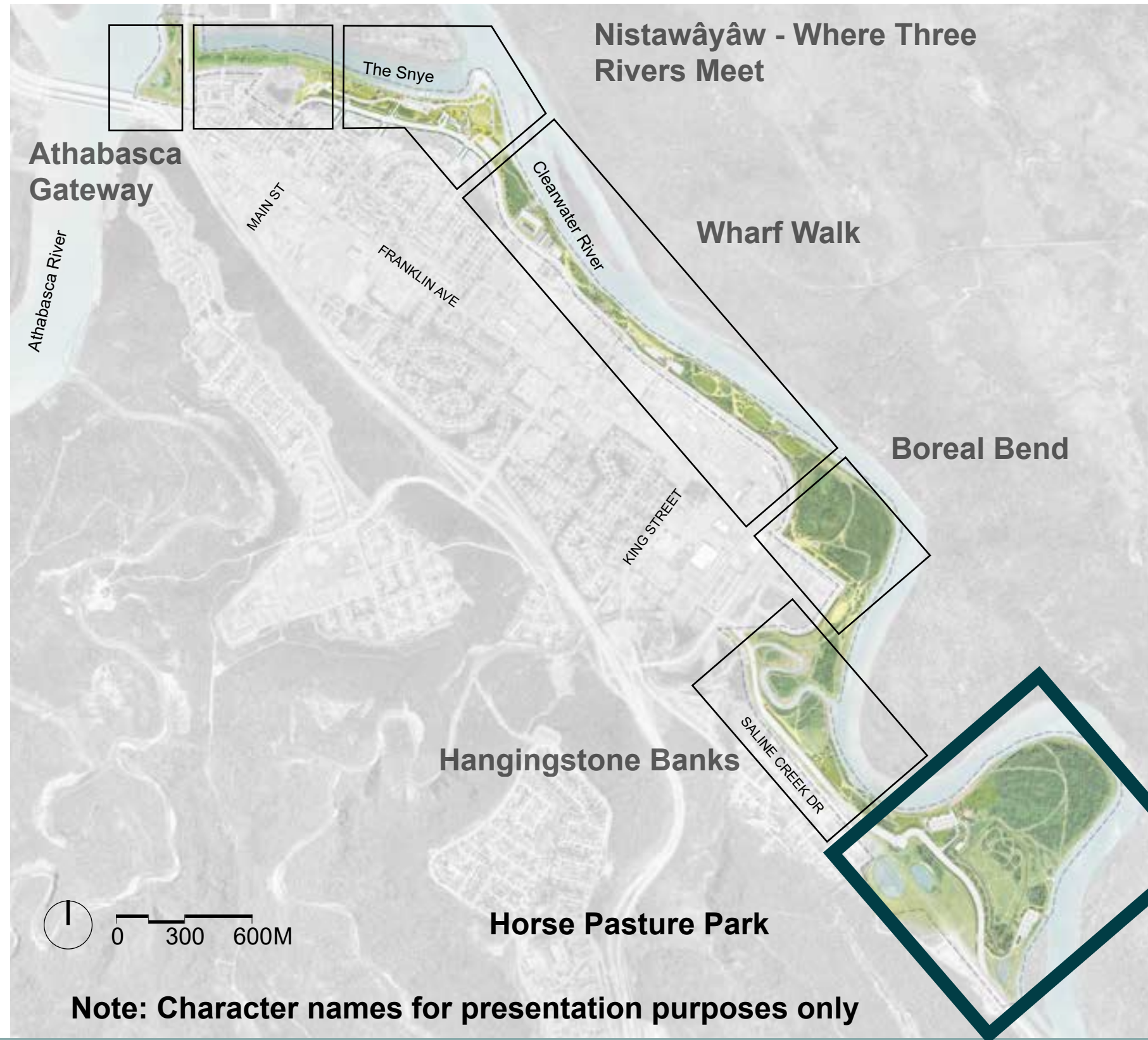


REGIONAL MUNICIPALITY
OF WOOD BUFFALO

URBAN
SYSTEMS

dtah

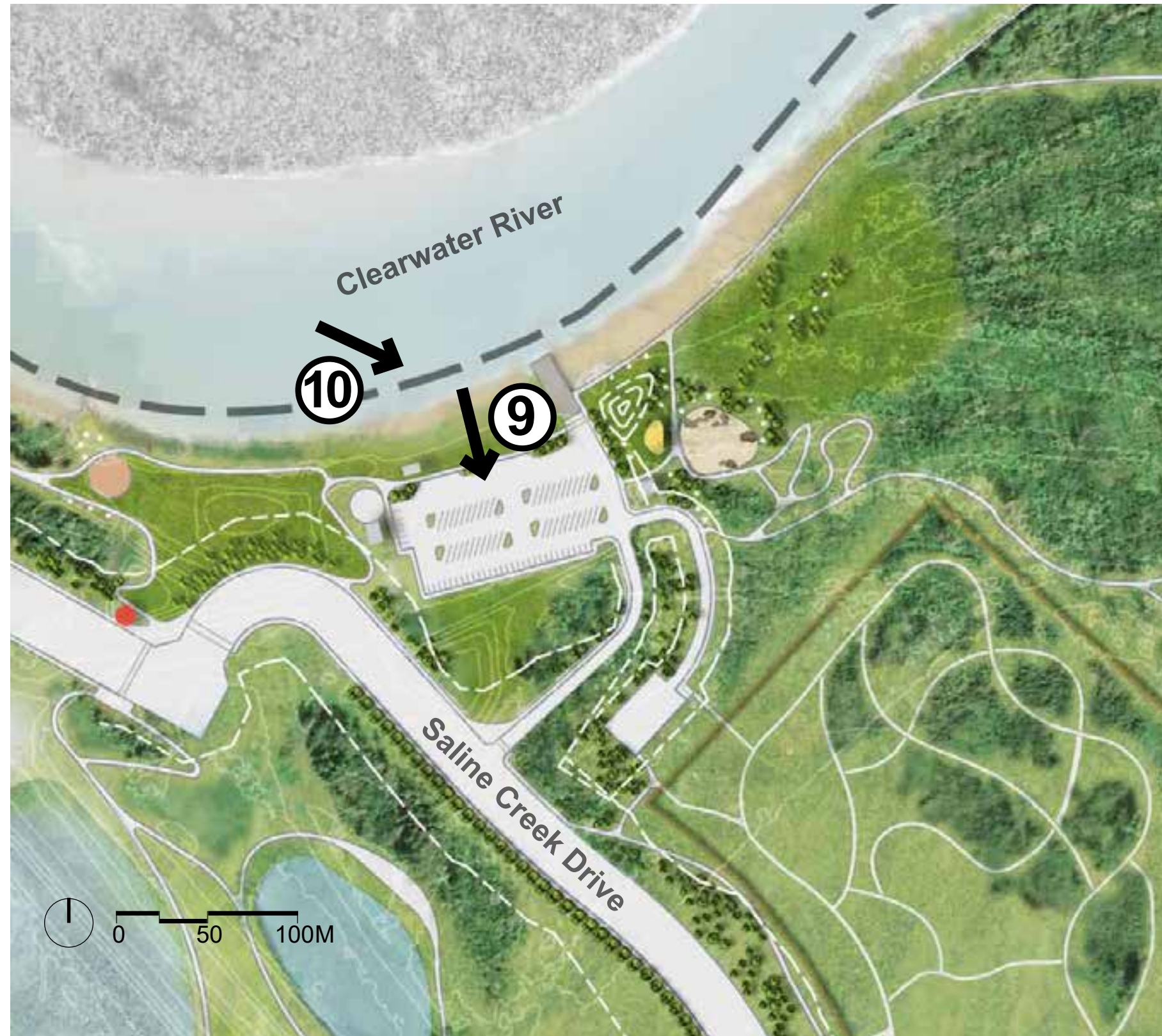
HORSE PASTURE PARK



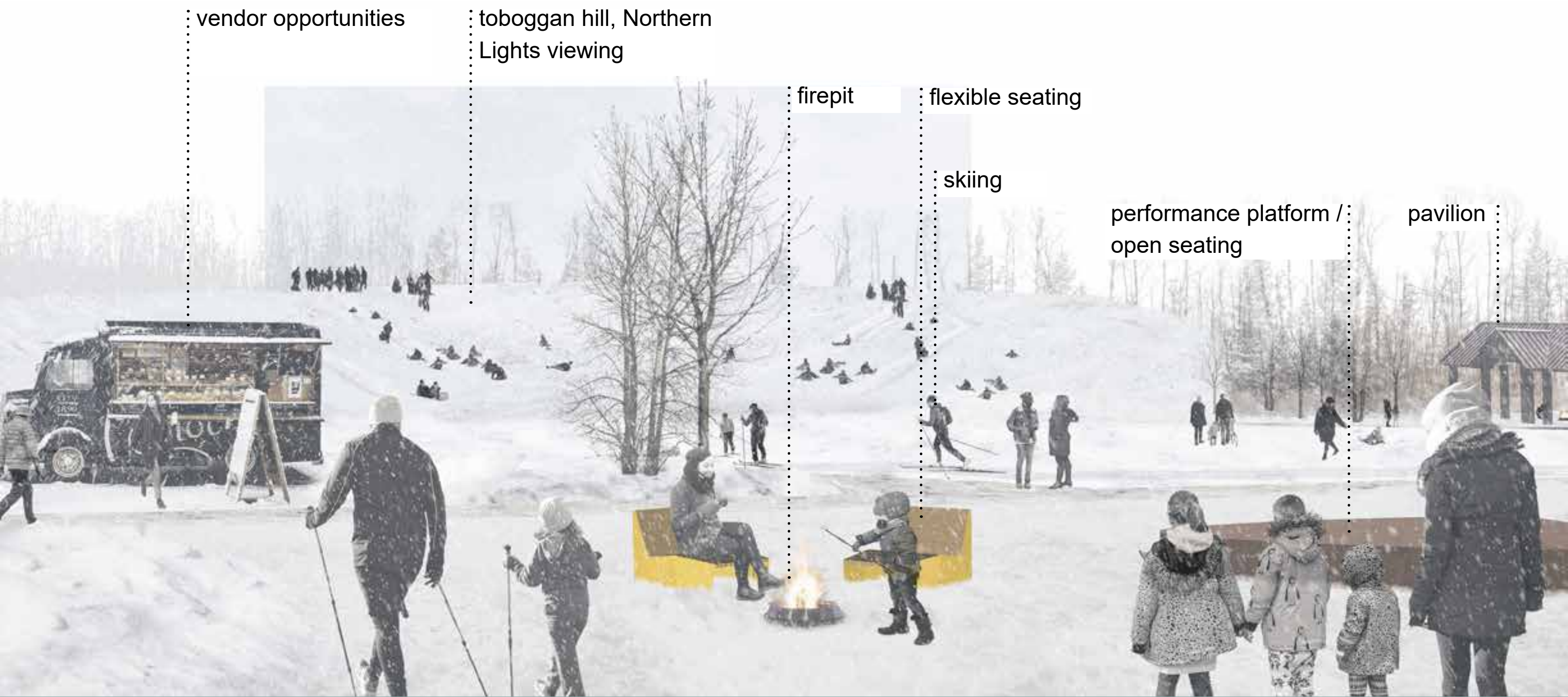
- Northern nature - resilience, flooding, fire, winter climate
- Natural wonder - Northern Lights viewing, boreal forest, view corridor along Clearwater Valley
- Get active! - tobogganing, snowshoeing, skiing, walking, biking, bird watching, igloo building, children's play
- Connecting to other regional tourism - Wood Buffalo National Park
- Boat launches
- Fishing
- Existing off leash dog park
- OHV staging



HORSE PASTURE PARK



9. HORSE PASTURE - NORTHERN WONDER



vendor opportunities

toboggan hill, Northern
Lights viewing

firepit

flexible seating

skiing

performance platform /
open seating

pavilion

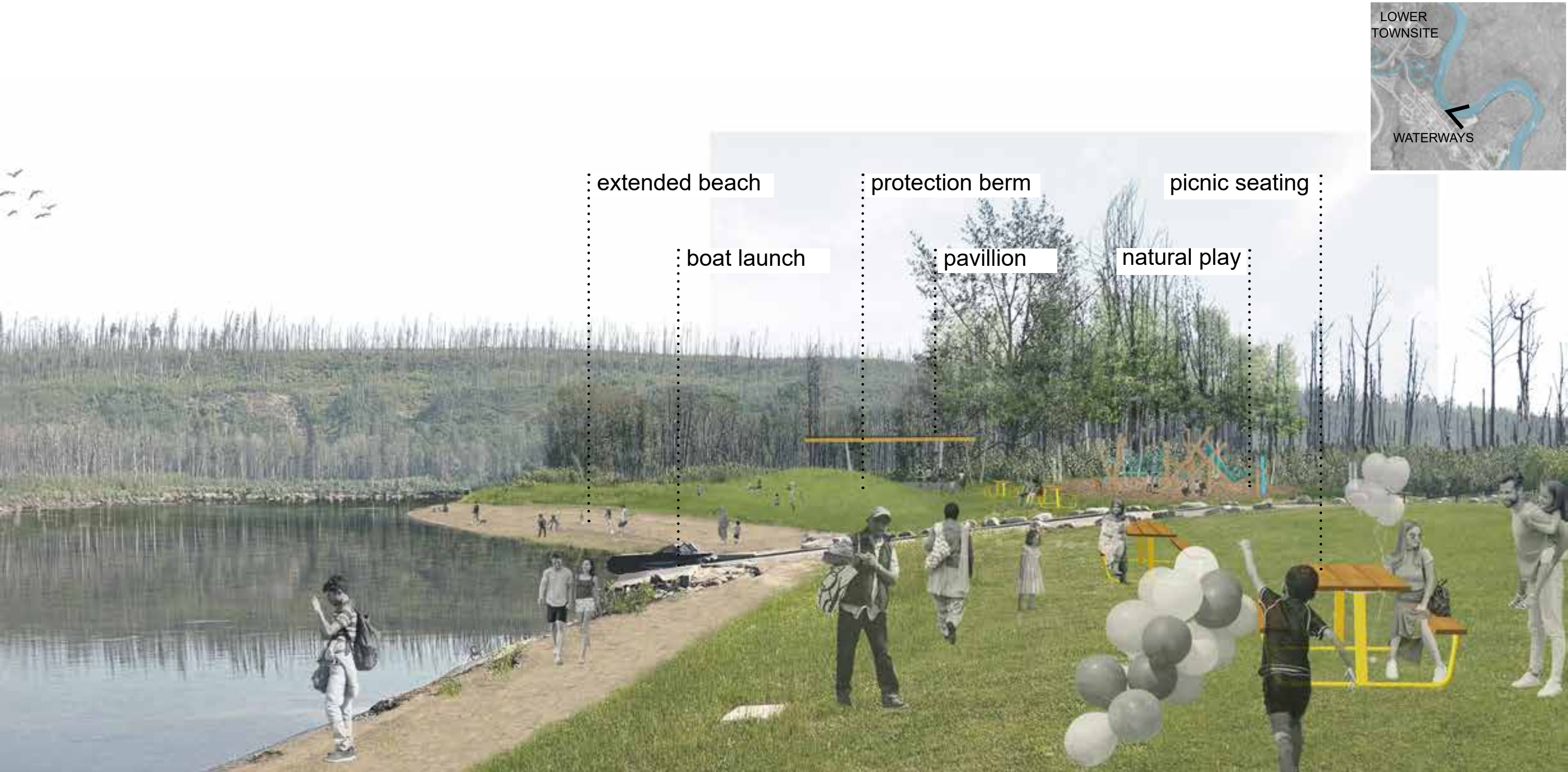


REGIONAL MUNICIPALITY
OF WOOD BUFFALO

URBAN
SYSTEMS

dtah

10. HORSE PASTURE - BEACH





EXCITING CHANGES COMING SOON



REGIONAL MUNICIPALITY
OF WOOD BUFFALO

URBAN
SYSTEMS

dtah