



PARTICIPATE **WOOD BUFFALO**

WHAT WE HEARD ABOUT NORTHSIDE DOG PARK

Public Works - Parks

July 11 – August 14, 2022

By Daniel Rippe | Daniel.rippe@rmwb.ca
August 29, 2022

CONTENTS

About the Project.....3

Stakeholder List4

Communications Channels4

Engagement Tactics4

Online Survey Results5

Next Steps14



We humbly acknowledge that the land on which we live, learn, work and play is Treaty 8 Territory, the traditional and ancestral lands of the Cree, Dene, and unceded territory of the Métis.

ABOUT THE PROJECT

The Public Works department is committed to providing outdoor recreation opportunities for residents in Wood Buffalo. While the RMWB is above average in off-leash areas compared to similar communities, the Parks Master Plan has identified a need to establish an off-leash dog parks in the north side, Timberlea neighbourhood, with separate areas for small and large dogs.

Land Administration has identified several additional viable locations for this park. The Municipality has identified only one off-leash dog park to be built in the north side.

There are currently four off-leash dog parks in the RMWB urban service area with three of them in the southern area and one in the Thickwood neighbourhood.

As part of the engagement, Public Works and Public Engagement will work together to get feedback from residents in the Wood Buffalo area to gauge their sentiment about the possible locations of the dog park. This engagement strategy will include showing residents potential locations where an off-leash park could be located, potential amenities and opportunities for residents to express any other feedback.

This feedback will provide Public Works with well-rounded information that can be used to determine where the north side dog park will be built and what types of amenities the community wants.



STAKEHOLDER LIST

- Residents of Timberlea, Stone Creek, Eagle Ridge and Parsons Creek
- All other residents of Wood Buffalo
- Dog Owners
- Regional Municipality of Wood Buffalo Internal Stakeholders
- Mayor and Councillors



COMMUNICATION CHANNELS

The project was promoted through the project's Participate Wood Buffalo (PWB) page, social media and, in-person during two public engagement sessions held on July 20 and August 6, 2022.

ENGAGEMENT TACTICS



In-person Pup-lick
Engagement Session



Online Survey



Idea Widget on PWB

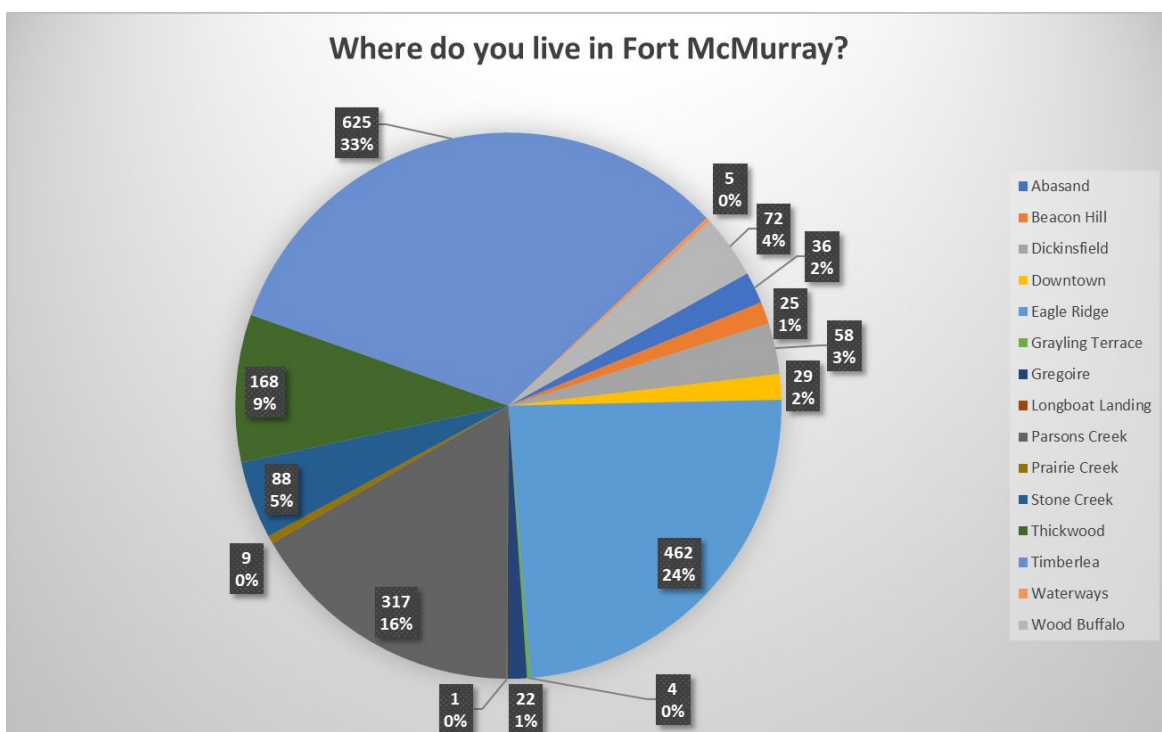
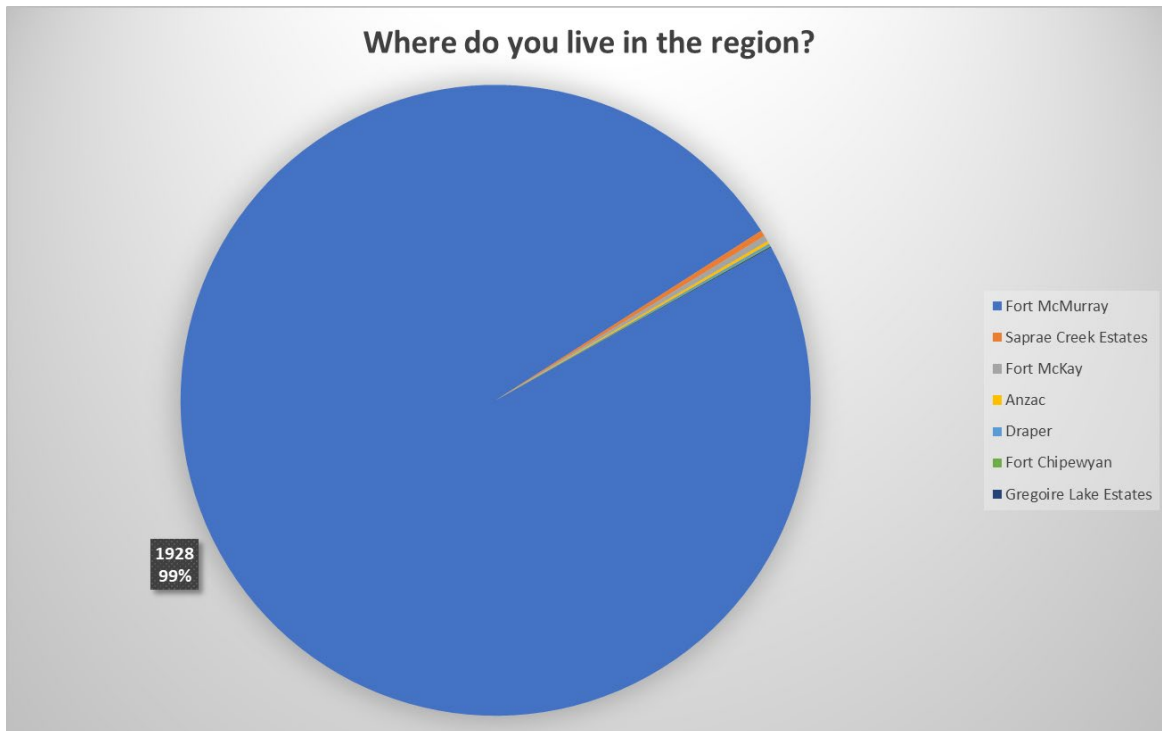
ENGAGEMENTS

3.8K	~25
Online Visits to Participate Wood Buffalo Project Page	In-person Information Session Participants
1962	30
Online Survey Respondents	Doggy treats given



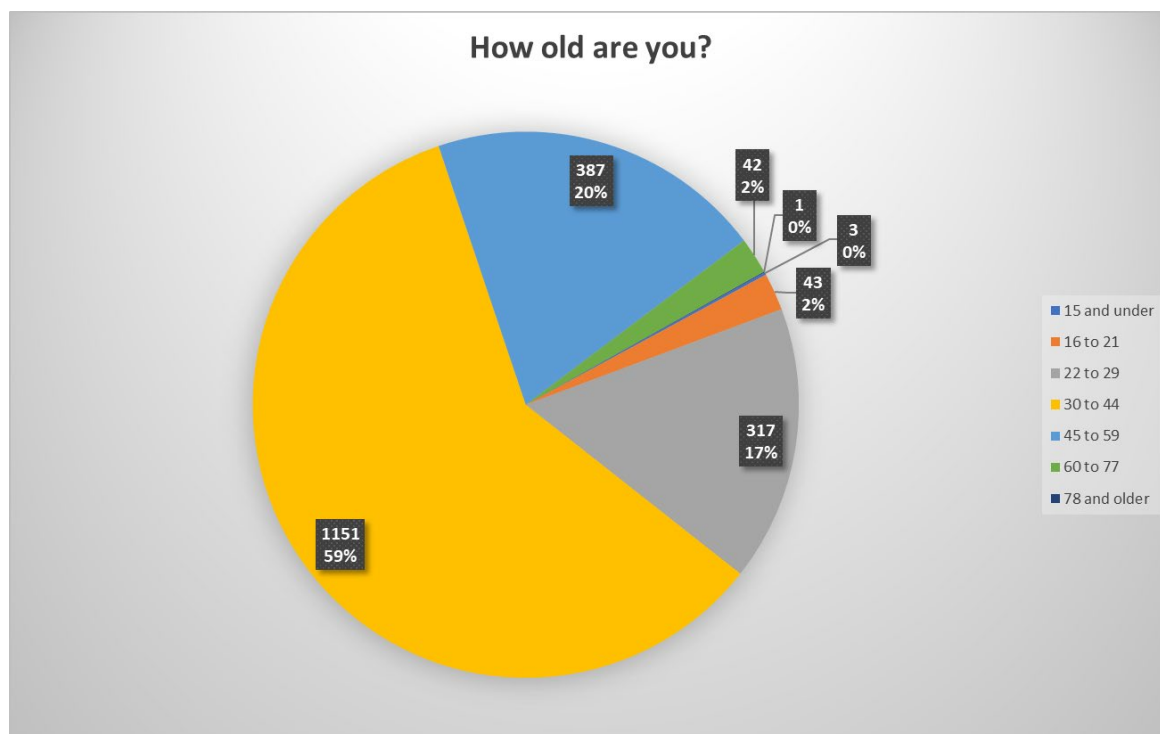
ONLINE SURVEY RESULTS

We have heard through multiple channels how important a Northside Dog Park was for the neighbourhoods north of Thickwood. It was important for us to know if the people answering the survey resided in the north side of town – since you were the primary stakeholders – or if you were an interested party in another community or neighbourhood.



Most of the survey responses were from Timberlea and Eagle Ridge residents (57%) with a large response from the Parsons Creek residents (16%). The overwhelming number of responses demonstrates how passionate you are about your respective neighbourhoods and how they are developed.

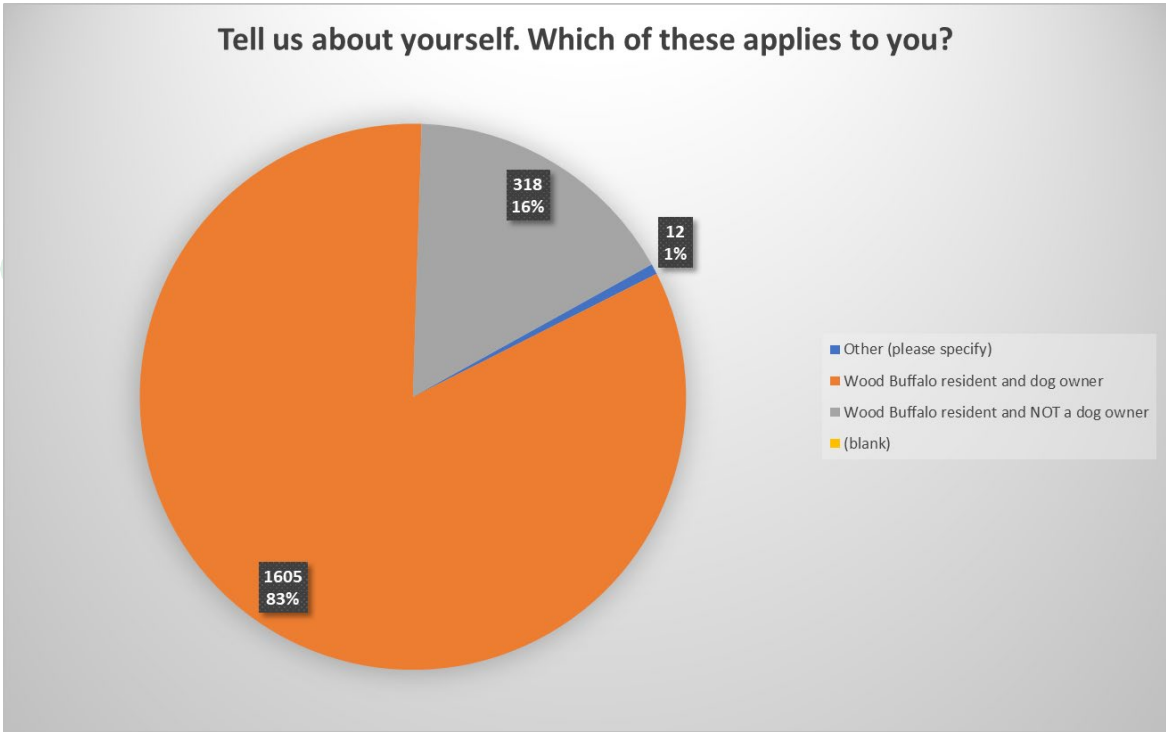
There was a small group of residents (20 respondents) that participated from Anzac, Draper, Fort Chipewyan, Fort McKay, Gregoire Lake Estates and Saprae Creek Estates.



Close to 60% of you are in the 30 to 44 age range. This helps us understand how the neighbourhood is growing and what the neighbourhood's needs might be.





Residents that are dog owners were the primary stakeholders. However, to form an informed decision, it is important to listen to all residents, whether they own a dog or not.





Understanding the community’s need for a dog park seems like a simple task but you need a way to provide more feedback than simply choosing a location. Giving you the opportunity to provide additional feedback is key to understand how the community feels about a dog park in the north side.

There was an overwhelming response to choosing a location where the Northside Dog Park could go. About 10% of all respondents chose “None of these” as their response on where the dog park could be located. This is due to a location not being desired or a dog park not being wanted. For the most part, the feedback and concerns you mentioned had to do with:

	A water feature for dogs to have a splash		Making sure the Birchwood Trails are not disrupted
	Traffic		Responsible Ownership



You were invited to provide any additional feedback and concerns. For these questions we received 569 responses concerns and feedback. The following is a summary of key themes.

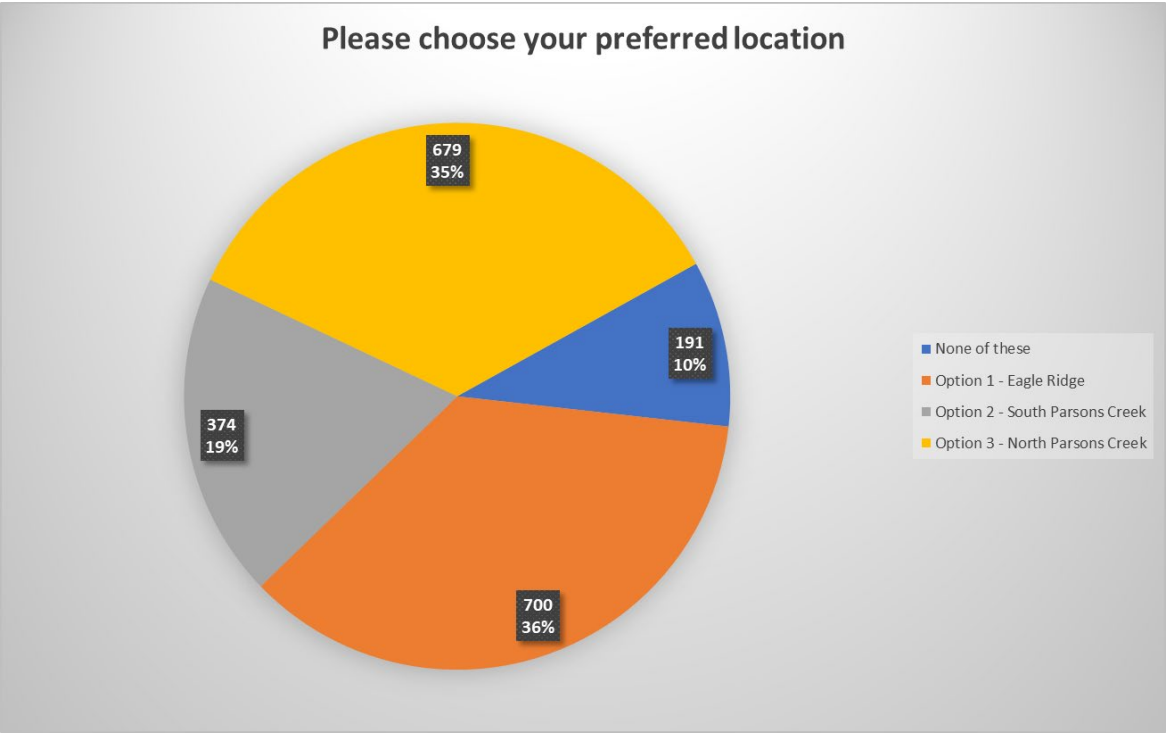
Feedback Themes:

- Trail continuity - Eagle Ridge
- Water feature (pool or splash park)
- Too close to residents
- Responsible ownership
- Increased traffic
- Area for small/reactive dogs
- Noise
- Waste bins inside the park
- Lighting
- Bylaw Enforcement
- Drinking water
- Smell
- Area used for recreational activities - Option 3
- Parsons Creek locations are in a flood area
- Safety monitoring
- Bathroom
- Poop bag dispensers
- Too close to playground - Parsons
- Ease of Access
- Big enough to be immersive
- One-way entrance/exit
- Larger area
- Drainage
- Accessible to people with disabilities



Proposed Locations

We asked you to choose which location you preferred for the dog park. Options 1 and 3 were extremely closed, varying by 21 votes. Option 1 being the Eagle Ridge location and Option 3 being the Heritage Point Storm Pond 1 location.



North Dog Park Option 1 - Eagle Ridge Plan:MCMURRA Lot: 40

+/- 5.5 Ac Requested
LUB: Urban Expansion



Eagle Ridge



AREA REQUESTED



Survey Parcels



MUNICIPAL LAND



Roads

0 5 10 20
Meters
1:1,200



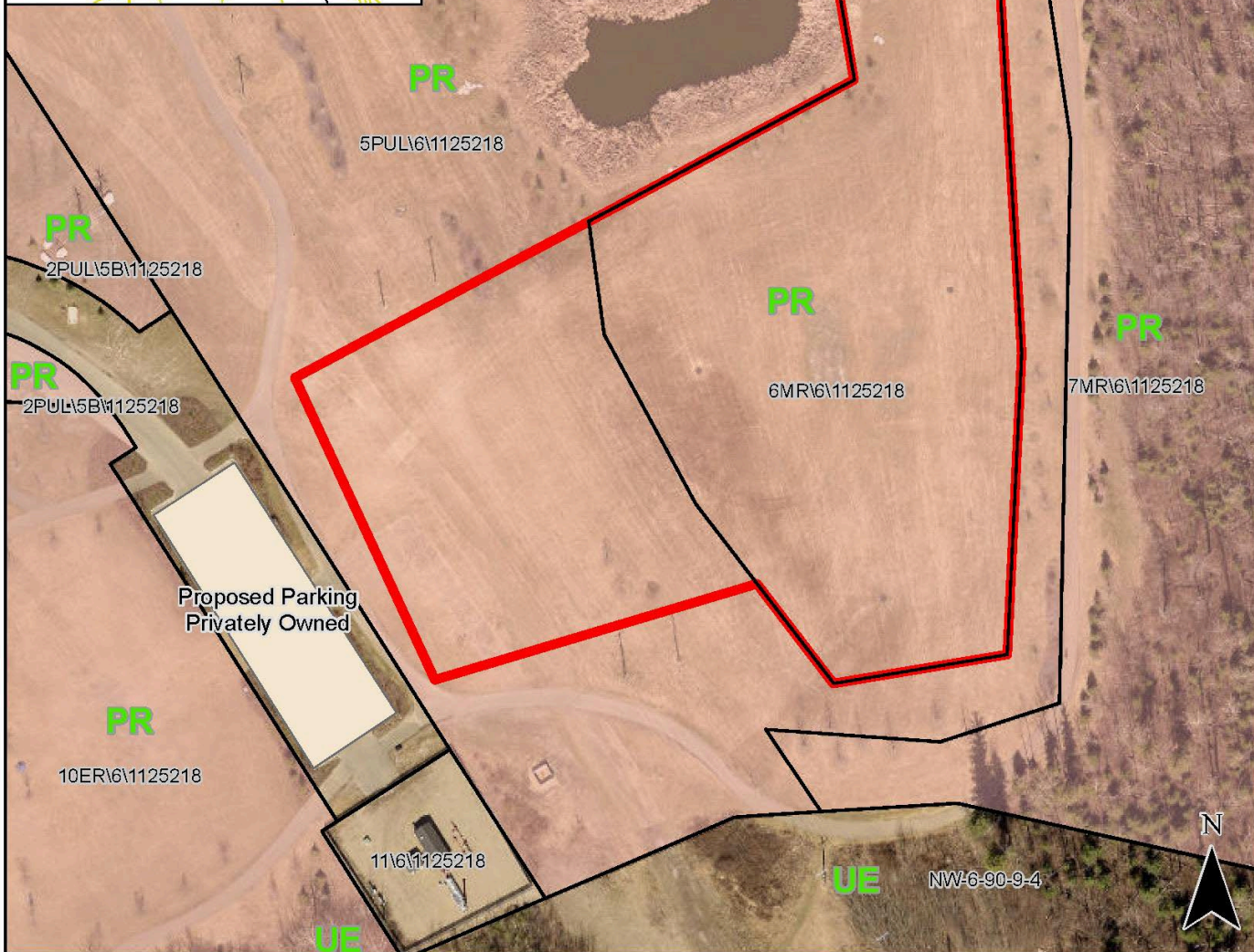
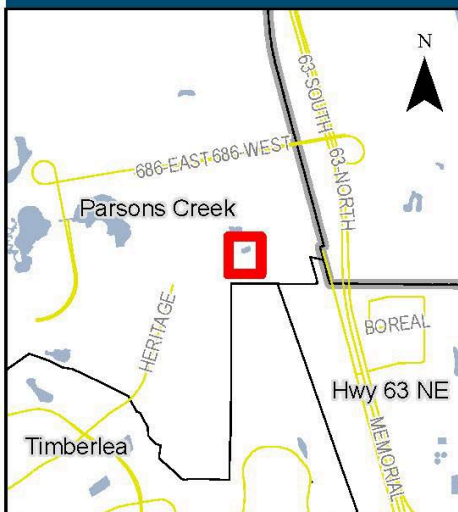
REGIONAL MUNICIPALITY
of WOOD BUFFALO

Map Produced by GIS (RMWB)
TICK77706_NORTH_DOG_PARK_1_Eagle_Ridge
07 Jul 2022

North Dog Park Option 2 - Heritage Point at Parsons Creek

Plan: 1125218 Block: 6 Lot: 6MR

+/- 3.5 Ac Requested
LUB: Parks & Rec



Heritage Point



AREA REQUESTED



Survey Parcels



MUNICIPAL LAND



Roads

0 5 10 20
Meters
1:1,200



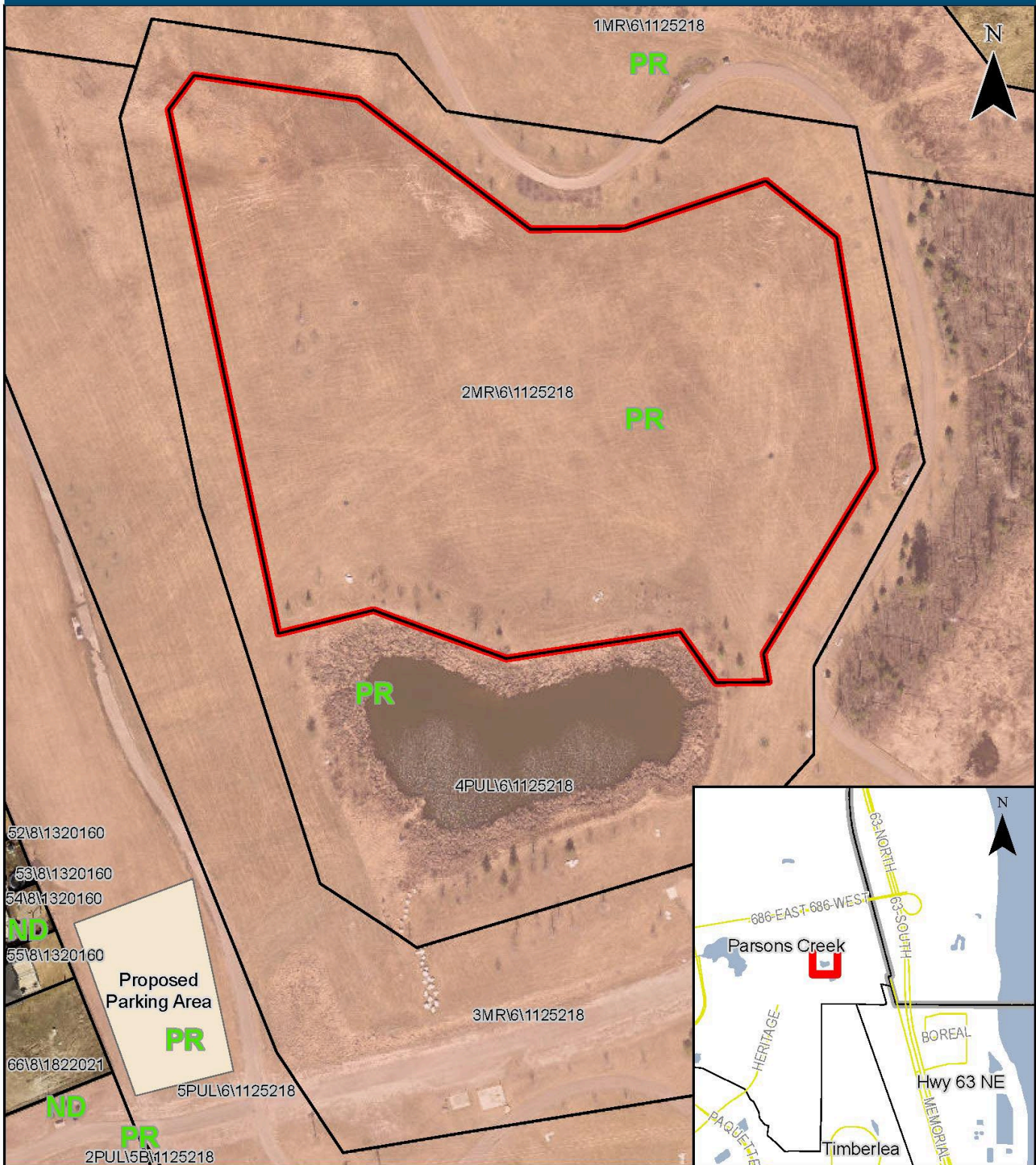
REGIONAL MUNICIPALITY
OF WOOD BUFFALO

Map Produced by GIS (RM/WB)
TICK77706_NORTH_DOG_PARK_2_Heritage_Park
07 Jul 2022

North Dog Park Option 3 - Heritage Point Storm Pond 1

Plan:1125218 B: 6 L: 2MR

+/- 4.2 Ac Requested
LUB: Parks & Rec



Heritage Point



AREA REQUESTED



Survey Parcels



MUNICIPAL LAND



Roads

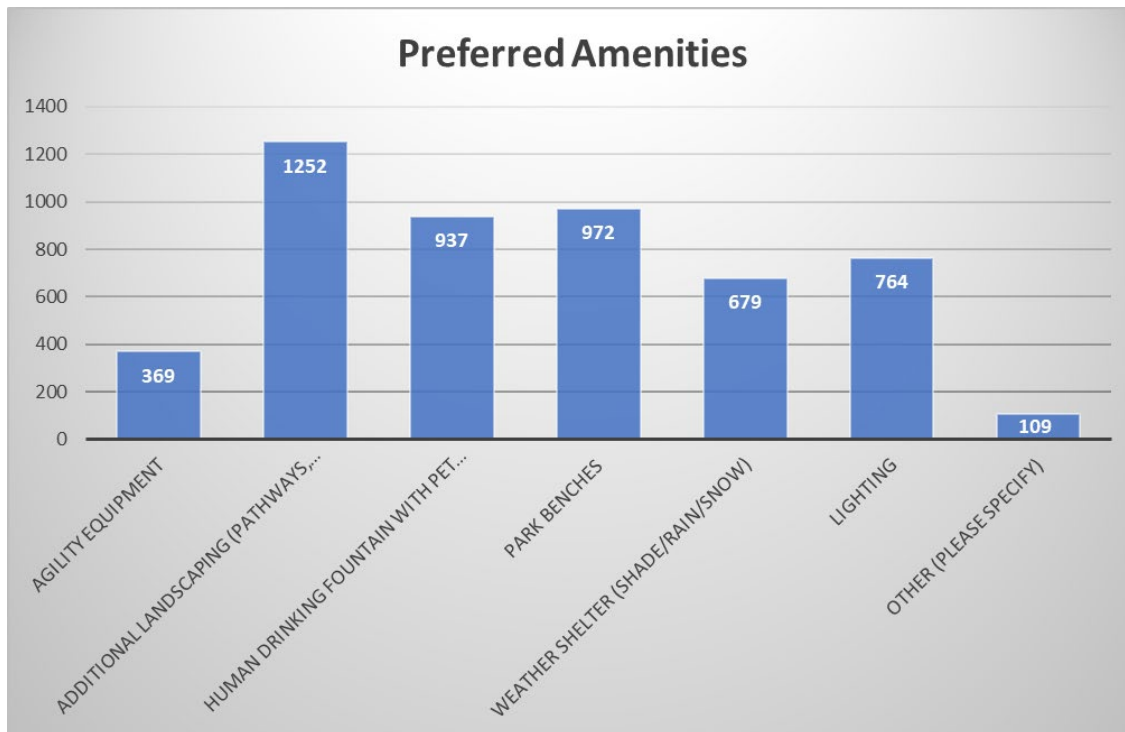
0 5 10 20
Meters
1:1,200



REGIONAL MUNICIPALITY
OF WOOD BUFFALO

Map Produced by GIS (RMWB)
TICK77706_NORTH_DOG_PARK_3_Storm_Pond1
07 Jul 2022

You were also asked what type of amenities you would like to see in the dog park. We asked this question to be proactive in understanding what you would like to see if this park were to be built. This information will help with planning the park and informing Council of the potential scope of this project. The information will help Council make an informed decision about approving funding for this project.



There were two amenities you chose the most: park benches and additional landscaping. It has been brought up that the Sara Holden Dog Park in Waterways is the benchmark for what a park in the region should look like. You want trees and trails instead of a fenced-off open-area design.

The other amenity that garnered a lot of feedback was the water fountain. You also said that having some sort of weather shelter (such as a gazebo) and lighting (for when it's dark) would be beneficial.

We only provided a small sample of amenities and as expected you had some great ideas of your own. The biggest idea that came out of the amenities question was a water feature for dogs to play and cool off in the summer. This idea had a few variations such as the area being fenced off so owners can decide whether their dog gets wet or not and an area to clean them up afterwards.



**Conceptual design*

Ideas

You know what you want in a dog park. That is why we included the Ideas tab on our project page. There were 18 ideas in total. The main topics we heard about were:

- Bone shaped benches
- On-leash directional walking trail
- Choosing the South Parsons Creek option would displace a community of people that regularly play volleyball
- The garbage bins should be inside the park

NEXT STEPS

Overall, the majority of those who answered the survey want a dog park. We do want to emphasize that the area highlighted for each option does not mean that is where a fence would go but it is a general idea of the location.

We thank you for your input and ideas throughout the engagement process of this project. The Public Works department will carefully review all the information and feedback provided. Once they have gathered all the information necessary, they will present to Council during the Budget sessions and proceed as directed.

To stay informed about the project, or to receive project updates visit participate.rmwb.ca/northsidedogpark.



We encourage you to continue using your voice to make our region even better by learning about all current projects. Visit participate.rmwb.ca to stay connected!



WHAT WE HEARD ABOUT NORTHSIDE DOG PARK

*Public Works - Parks
July 11 – August 14, 2022*

By Daniel Rippe | Daniel.rippe@rmwb.ca
August 29, 2022

